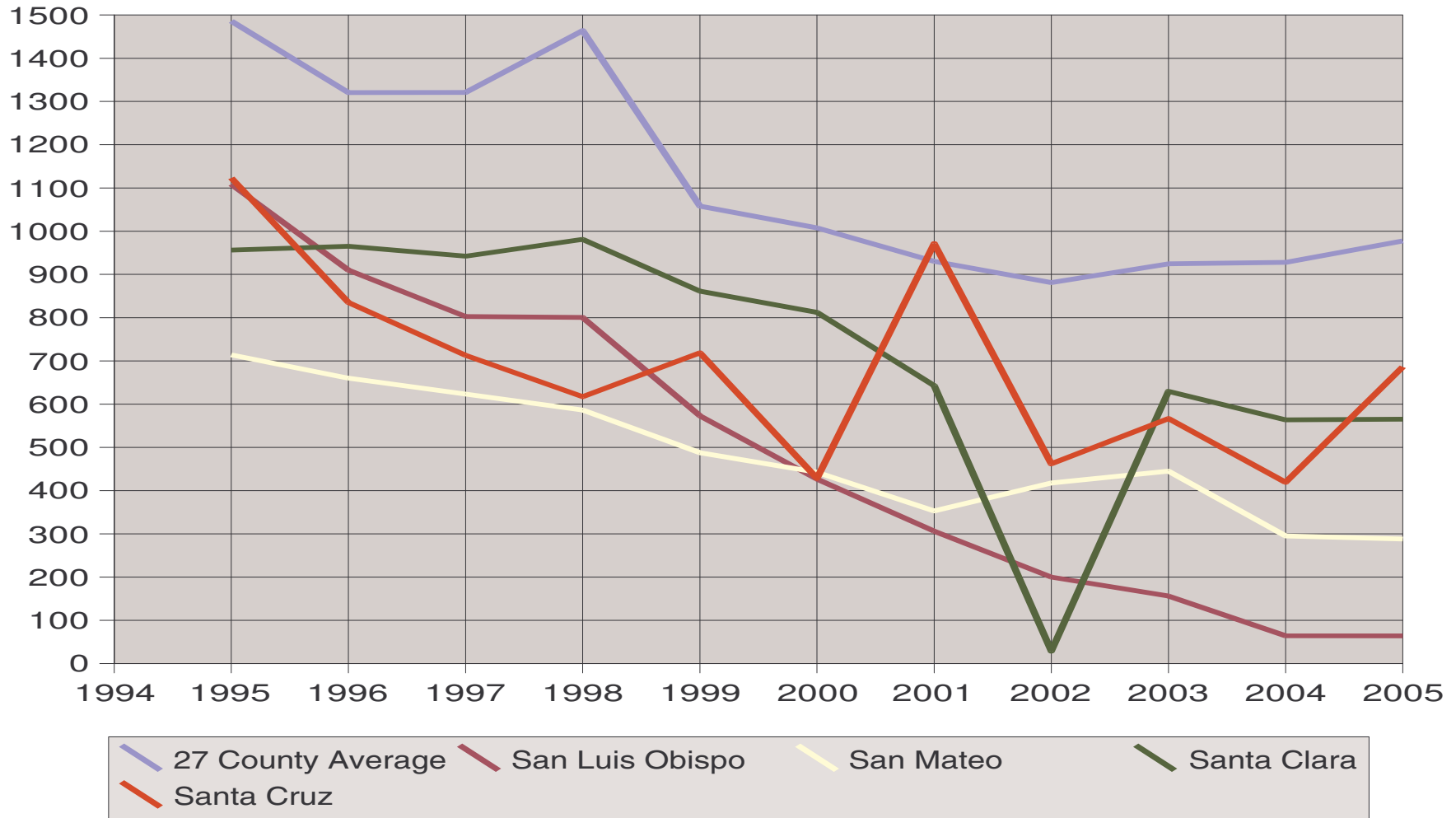
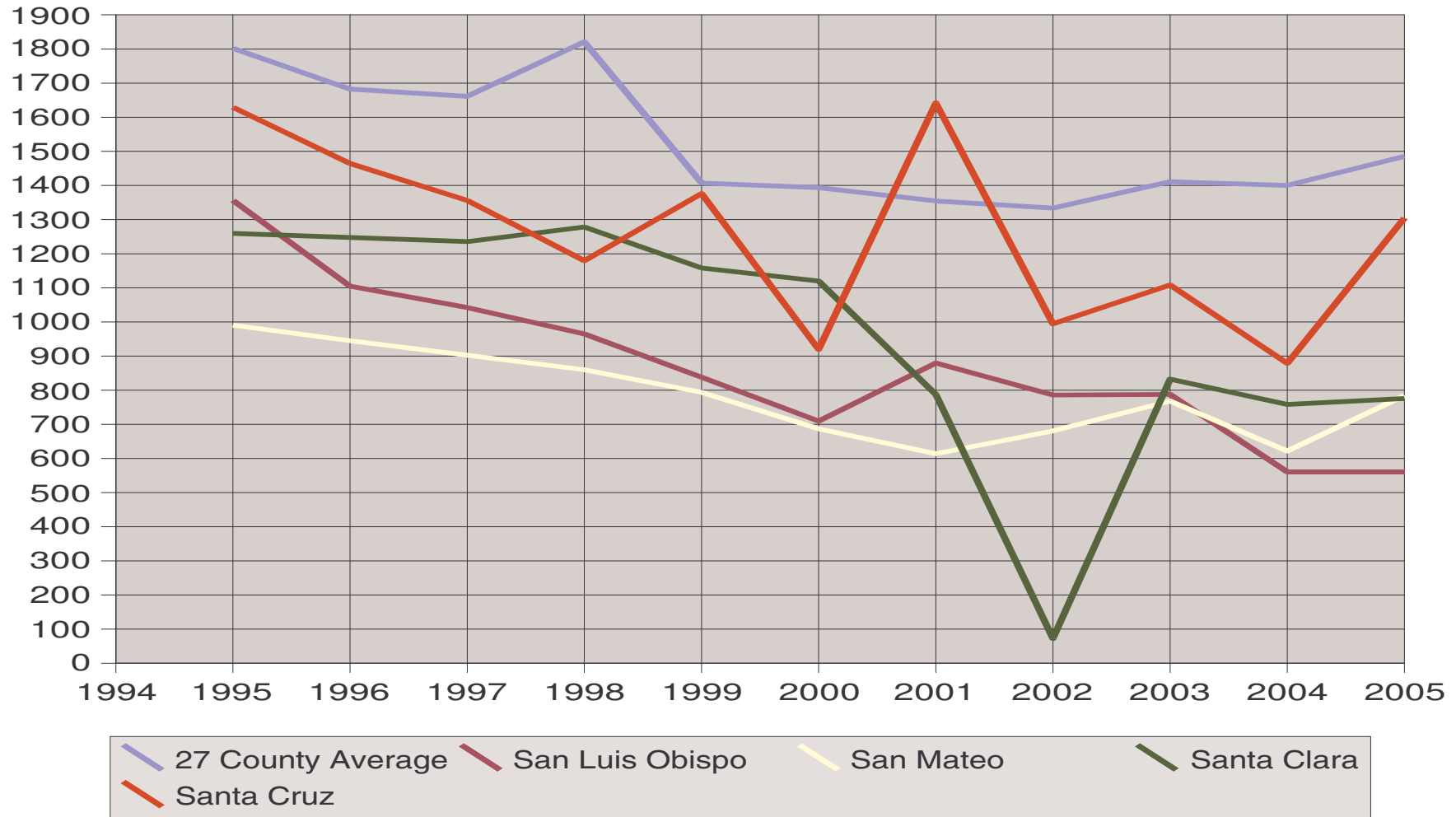


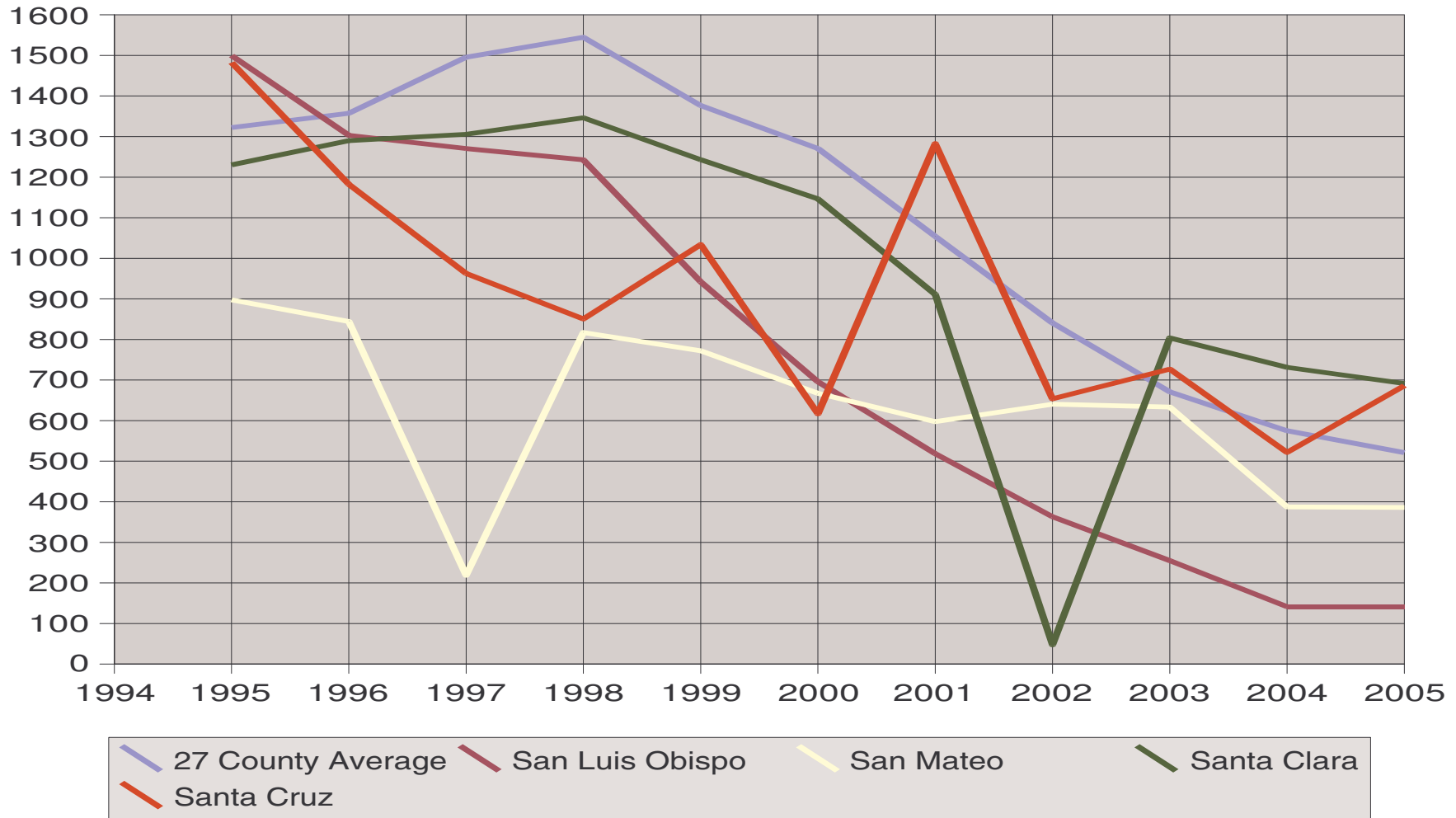
# Cats Euthanized per 100,000 human population



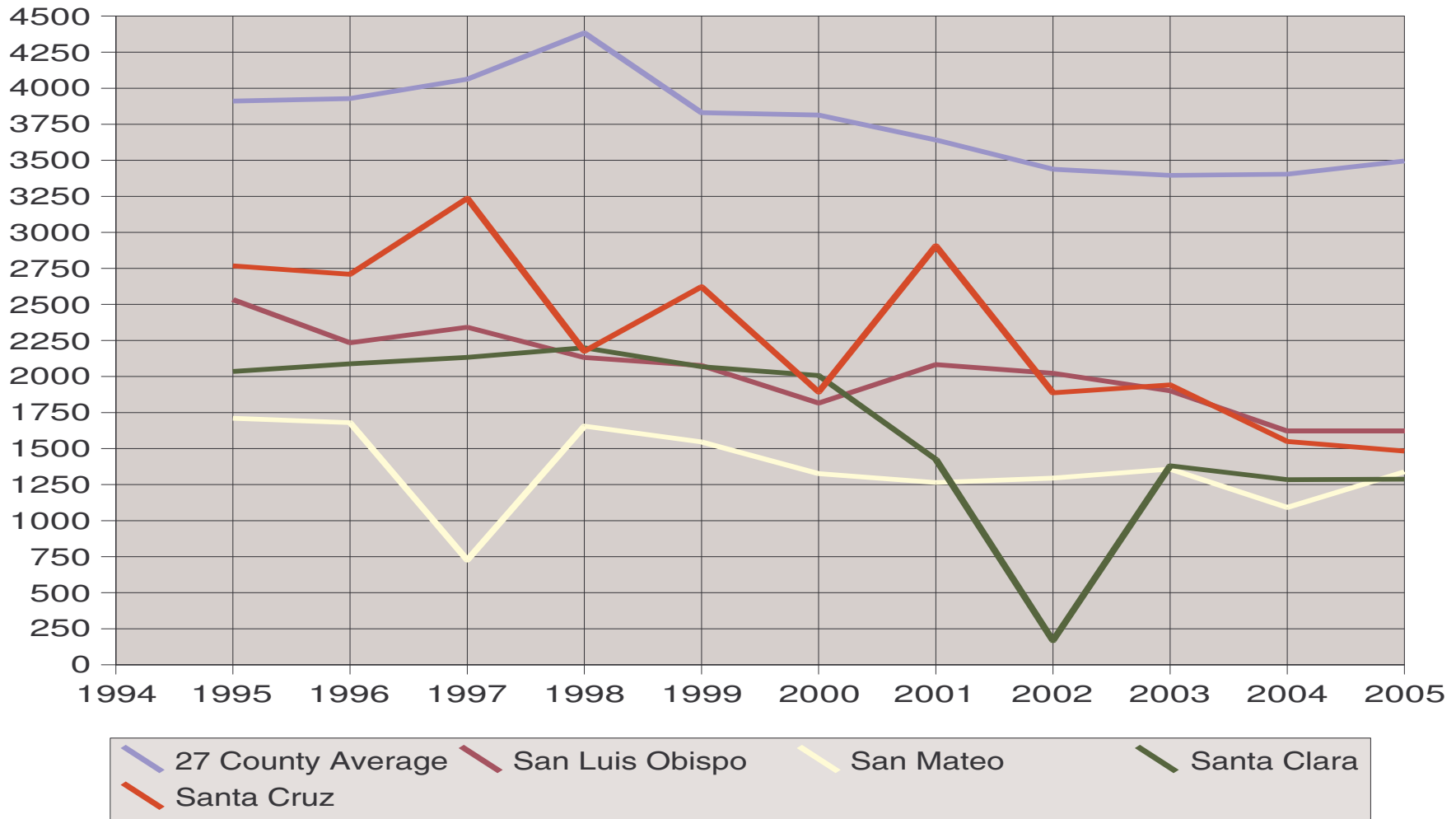
# Cats Processed per 100,000 human population



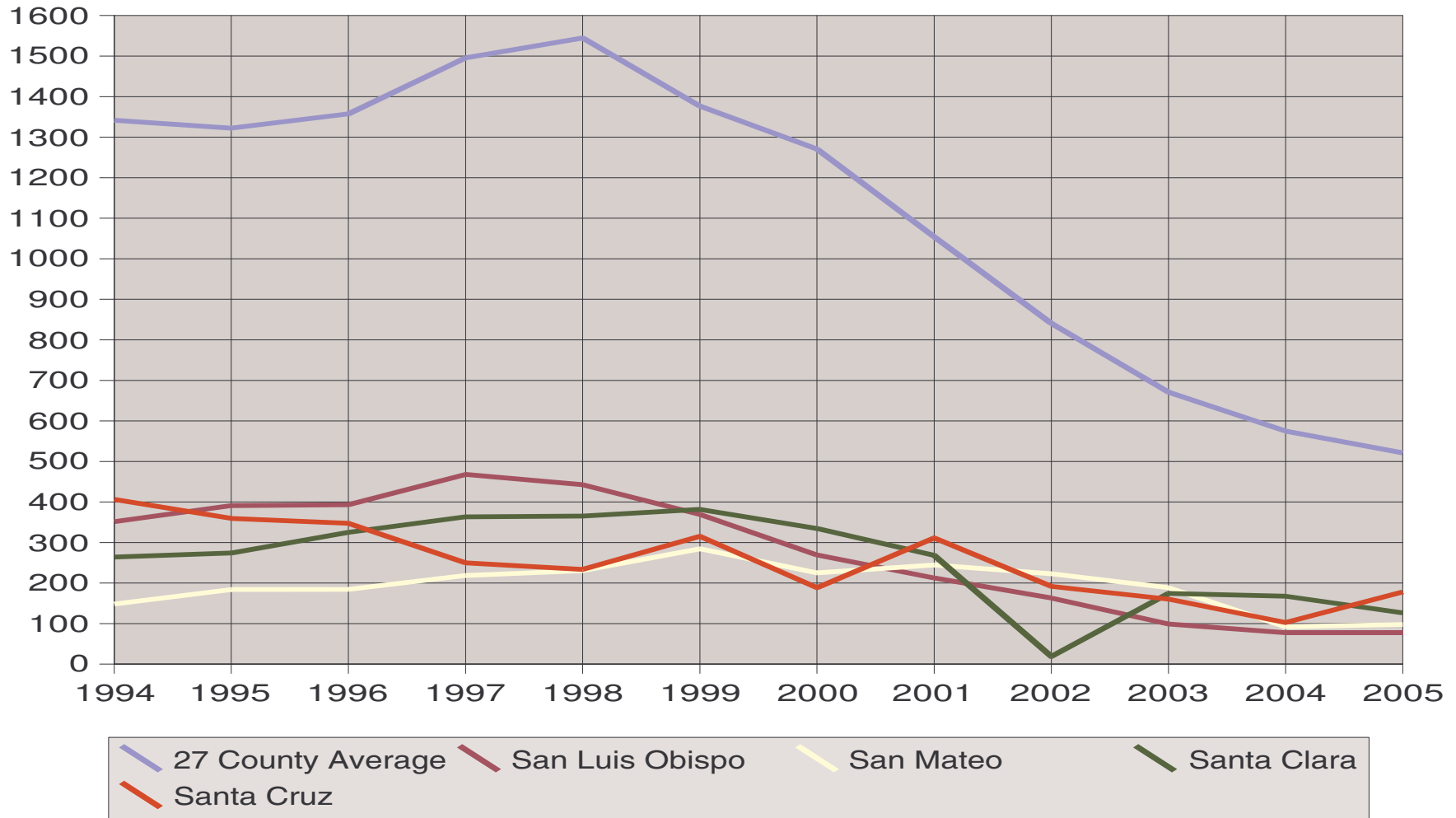
# Dogs and Cats Euthanized per 100,000 human population



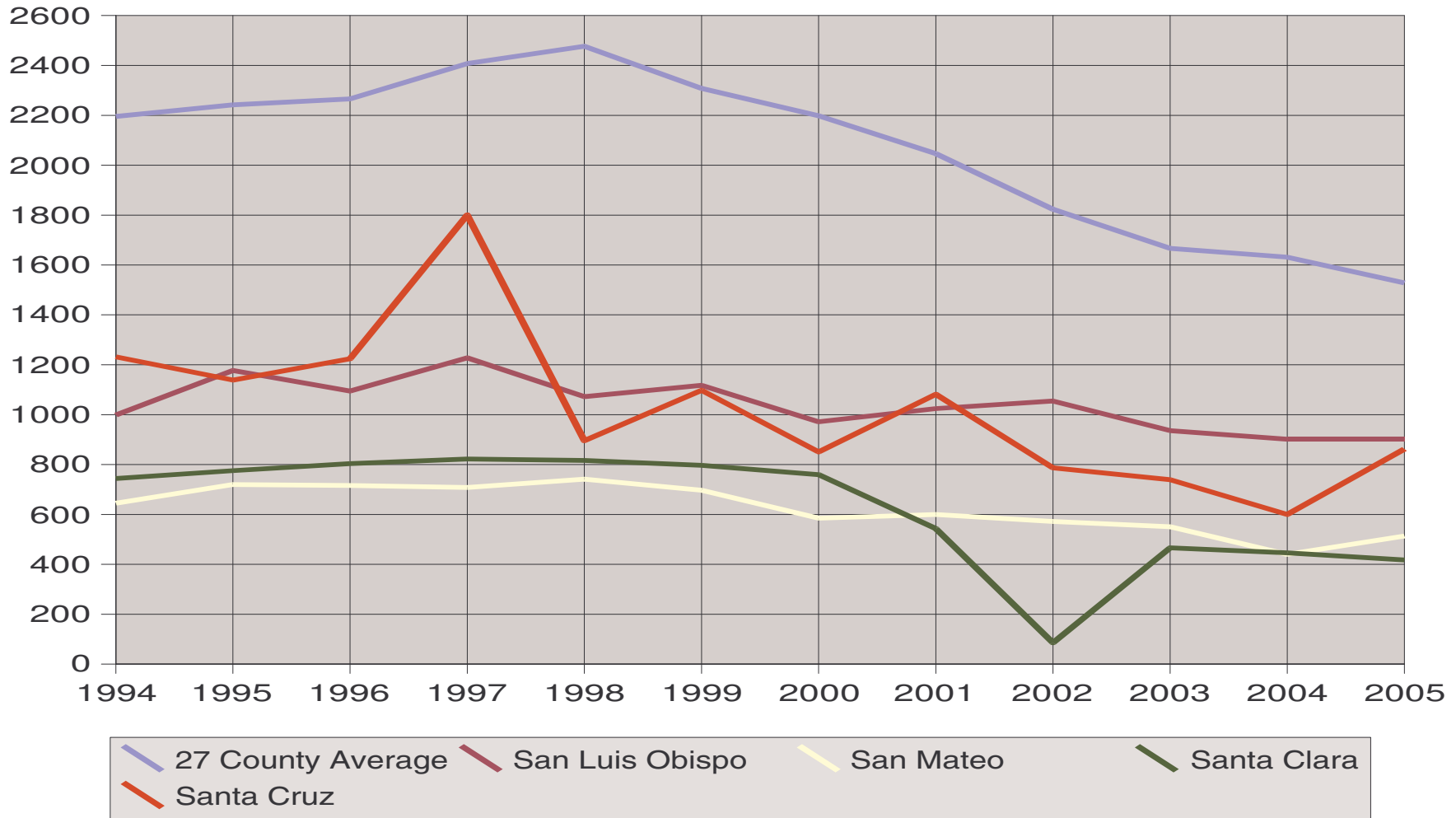
# Dogs and Cats Processed per 100,000 human population



# Dogs Euthanized per 100,000 human population



# Dogs Processed per 100,000 human population



Santa Cruz Stats by Pop

Cats Euthanized in She	1994	1995	1996	1997	1998	1999	2000	2001	2002	2003	2004	2005
27 County Average		1486	1320.55	1320.88	1463.94	1058.02	1007.68	930.19	881.17	924.57	927.91	977.52
San Luis Obispo		1108.69	909.96	802.62	800.35	572.94	426.66	306.15	199.98	156.14	64.09	64.09
San Mateo		713.85	660.17	623.26	586.35	487.7	442.4	352.91	417.61	445.02	295.17	288.09
Santa Clara		956.18	965.01	942.22	981.04	861.38	812.15	642.76	28.7	629.56	563.85	565.23
Santa Cruz		1123.16	835.1	712.88	617.01	718.66	428.4	971.38	462	566.59	419.12	686.39
Cats Processed in Shel	1994	1995	1996	1997	1998	1999	2000	2001	2002	2003	2004	2005
27 County Average		1801.98	1682.42	1661.3	1820.82	1407.13	1393.49	1354.54	1333.58	1411.23	1400.29	1485.32
San Luis Obispo		1356.32	1104.83	1042.26	964.92	838.26	709.62	879.78	786.04	787.83	560.73	560.73
San Mateo		990.45	945.23	902.63	860.03	794	687.09	613.88	680.93	768.13	621.82	784.54
Santa Clara		1259.55	1247.6	1235.55	1278.27	1158.3	1119.82	787.68	72.46	832.67	758.2	775.82
Santa Cruz		1629.17	1464.54	1356.06	1179.41	1376.21	919.74	1641.68	994.63	1108.52	878.92	1304.62
Dogs and Cats Euthaniz	1994	1995	1996	1997	1998	1999	2000	2001	2002	2003	2004	2005
27 County Average		1322.4	1357.33	1495.73	1544.74	1376.57	1270.66	1054.07	840.49	670.84	574.89	521.03
San Luis Obispo		1499.76	1303.14	1270.49	1242.81	942.17	695.9	518.62	363.06	254.97	141.56	141.56
San Mateo		897.76	844.39	218.63	817.05	772.14	667.33	597.36	640.51	633.51	387.32	385.92
Santa Clara		1230.32	1290.05	1305.66	1346.27	1243.08	1146.61	911.09	47.51	803.85	731.39	691.55
Santa Cruz		1482.51	1182.58	962.73	850.58	1034.03	616.81	1282.65	653.75	726.82	521.61	686.39
Dogs and Cats Process	1994	1995	1996	1997	1998	1999	2000	2001	2002	2003	2004	2005
27 County Average		3910.71	3928.13	4062.73	4383.07	3830.24	3813.69	3641.44	3438.18	3395.53	3403.68	3495.38
San Luis Obispo		2533.46	2233.95	2341.63	2131.49	2076.12	1815.84	2082.66	2022.5	1901.29	1621.4	1621.4
San Mateo		1710.34	1679.88	726.65	1655.46	1545.56	1326.05	1264.4	1295	1357.97	1091.82	1339.29
Santa Clara		2035.13	2088.54	2132.26	2199.28	2067.91	2006.27	1425.79	168.01	1380.36	1284.48	1287.65
Santa Cruz		2767.8	2709.3	3236.2	2175.29	2622.39	1892.41	2906.52	1886.98	1942.14	1549.36	1482.64
Dogs Euthanized in She	1994	1995	1996	1997	1998	1999	2000	2001	2002	2003	2004	2005
27 County Average	1341.86	1322.4	1357.33	1495.73	1544.74	1376.57	1270.66	1054.07	840.49	670.84	574.89	521.03
San Luis Obispo	351.42	391.07	393.17	467.88	442.46	369.23	269.24	212.47	163.08	98.82	77.46	77.46
San Mateo	148.32	183.91	184.21	218.63	230.7	284.44	224.94	244.45	222.9	188.5	92.14	97.84
Santa Clara	264.19	274.13	325.05	363.44	365.23	381.69	334.46	268.33	18.81	174.29	167.54	126.32
Santa Cruz	406.37	359.35	347.48	249.85	233.57	315.37	188.4	311.27	191.75	160.23	102.49	178.02
Dogs Processed in Shel	1994	1995	1996	1997	1998	1999	2000	2001	2002	2003	2004	2005
27 County Average	2195.34	2242.21	2265.8	2407.57	2477.17	2308.09	2198.22	2046.36	1823.58	1666.71	1631.52	1528.06
San Luis Obispo	998.55	1177.14	1094.53	1227.81	1071.99	1117.55	971.59	1024.48	1054.67	936.06	901.65	901.65
San Mateo	645.31	719.89	716.19	708.09	741.34	697.05	584.78	599.76	571.9	550.91	439.97	513.71
Santa Clara	744.03	775.58	804.01	822.27	816.66	796.71	759.62	543.39	85.62	466.17	446.02	417.5
Santa Cruz	1231.73	1138.62	1224.04	1800.74	895.62	1097.9	850.55	1081.79	787.1	739.54	599.77	862.4



**Shelter statistics: 27 counties, the most consistent reporting agencies.**

Values shown with red or yellow background were not reported or under-reported and are based on average values c

**Dogs Processed in Shelters / 100,000 population**

	1994	1995	1996	1997	1998	1999	2000	2001
Dogs Processed iMadera	3943.35	3657.82	3888.88	4136.82	4360.31	5892.54	4252.27	3073.06
Dogs Processed iMerced	2999.02	3354.99	3303.58	4300.8	4306.75	4137.2	3647.53	3516.7
Dogs Processed iYuba	3636.25	3751.43	3354.4	3446.96	3562.81	4044.69	3942.33	3634.02
Dogs Processed iShasta	4460.32	4657.09	4784.74	4989.39	5005.12	4118.23	3680.81	3847.49
Dogs Processed iFresno	3707.85	3866.14	4061.81	4185.56	4303.54	4366.33	3888.33	3306.99
Dogs Processed iMariposa	1941.75	2970.72	2609.63	2656.25	2920.31	2446.07	2093.42	3031.01
Dogs Processed iDel Norte	3131.12	3168.84	3659.63	3369.8	4090.54	3884.3	3911.51	3502.88
Dogs Processed iSan Bernardino	2883.98	2513.68	3096.61	3905.62	3454.16	1025.81	3044	2633.43
Dogs Processed iSan Joaquin	2614.35	2726.47	1031.72	3157.69	3260.12	3330.23	4017.36	2751.42

	1994	1995	1996	1997	1998	1999	2000	2001
Dogs Processed iSiskiyou	1781.33	1899.02	2120.47	1974.24	1964.41	2059.7	1658.38	2120.71
Dogs Processed iButte	2531.75	2808.5	3102.48	3326.87	2381.08	2653.49	2721.19	2489.75
Dogs Processed iTuolumne	2823.23	3126.69	3350.23	3426.48	3702.59	3197.36	3130.94	2495.3
Dogs Processed iTehama	3169.37	3380.94	3672.9	3923.78	4245.95	3914.12	3769.39	3421.45
Dogs Processed iNevada	2692.96	1530.23	1763.01	1734.41	1559.28	1389.45	1301.04	1584.14
Dogs Processed iEl Dorado	1958.65	1799.08	2036.59	2103.76	1746.46	1626.5	1300.17	1147.61
Dogs Processed iNapa	874.42	1030.87	1044.1	1181.06	1386.71	1278.59	1334.07	1124.98
Dogs Processed iYolo	1884.35	2200.12	2091.93	2188.5	2090.97	1696.63	1860.45	1745.85
Dogs Processed iSan Luis Obispo	998.55	1177.14	1094.53	1227.81	1071.99	1117.55	971.59	1024.48

	1994	1995	1996	1997	1998	1999	2000	2001
Dogs Processed iMono	3022.63	2532.41	2566.72	933.49	2733.28	2057.35	815.98	1752.21
Dogs Processed iLos Angeles	1185.1	1289.24	1083.6	1056.54	1070.06	1242	1413.33	1156.86
Dogs Processed iMonterey	1328.46	1468.97	1465.7	1258.51	1838.15	1006.9	1243.91	1158.71
Dogs Processed iSan Diego	1079.4	742.84	974.19	953.98	1131.9	1106	1221.41	998.89
Dogs Processed iVentura	1053.96	1211.96	1213.15	1204.54	1216.24	1169.16	1021.05	633.21
Dogs Processed iSanta Cruz	1231.73	1138.62	1224.04	1800.74	895.62	1097.9	850.55	1081.79
Dogs Processed iOrange	950.91	1040.34	1061.76	1030.53	1027.27	966.61	916.55	875.7
Dogs Processed iSan Mateo	645.31	719.89	716.19	708.09	741.34	697.05	584.78	599.76
Dogs Processed iSanta Clara	744.03	775.58	804.01	822.27	816.66	796.71	759.62	543.39

Stats by pop

27 County Average (excludes zero) 2195.34 2242.21 2265.8 2407.57 2477.17 2308.09 2198.22 2046.36

**Dogs Euthanized in Shelters / 100,000 population**

	1994	1995	1996	1997	1998	1999	2000	2001
Dogs Euthanized Madera	3145.37	2858.19	3222.47	3418.01	3244	5090.13	3504.35	2533.09
Dogs Euthanized Yuba	2810.41	2904.86	2613.91	2551.95	2587.66	2825.6	2888.39	2690.9
Dogs Euthanized Fresno	2652.75	2890.73	2967.79	3134.73	3213.27	3342.01	2981.53	2454.38
Dogs Euthanized Merced	1971.2	2377.99	2189.21	2501.11	3135.51	2713.63	2524.74	2046.06
Dogs Euthanized San Bernardino	1988.06	1773.94	2205.83	2503.71	2600.19	760.94	2193	1785.37
Dogs Euthanized Shasta	4472.3	2624.4	2994.92	3212.22	3200.56	2487.85	2162.34	2189.85
Dogs Euthanized San Joaquin	1842.21	1914.18	649.95	2360.56	2360.54	2325.39	2830.38	1813.6
Dogs Euthanized Del Norte	2302.08	2111.36	2708.98	2494.71	2909.14	2439.91	2281.41	1901.04
Dogs Euthanized Butte	1317.76	1651.34	1986.48	2274.82	1651.06	1675.76	1601.02	1457.82
	1994	1995	1996	1997	1998	1999	2000	2001
Dogs Euthanized Tehama	2196.76	2486.79	2509.87	3004.6	3233.2	2669.45	2551.5	1978.25
Dogs Euthanized Mariposa	939.95	1321	1012.87	1388.22	1583.3	996.11	933	763.58
Dogs Euthanized Tuolumne	1799.57	2124.99	2263.98	2431.76	2442.65	1957.03	1561.81	1078.46
Dogs Euthanized Siskiyou	1146.27	1161.75	1474.04	1254.72	1199.61	830.63	318.57	762.09
Dogs Euthanized Yolo	638.12	730.53	755.67	907.63	881.03	760.58	677.86	604.44
Dogs Euthanized Los Angeles	672.16	789.44	640.48	657.96	729.13	780	830.34	685.29
Dogs Euthanized Monterey	583.77	753.05	760.6	699.59	1010.6	508.75	645.51	512.29
Dogs Euthanized Napa	301.52	354.76	339.84	430.69	498.42	465.76	399.5	191.67
Dogs Euthanized Ventura	530.27	585.37	618.26	611.56	617.29	631.86	503.98	225.68
	1994	1995	1996	1997	1998	1999	2000	2001
Dogs Euthanized San Diego	511.19	355.99	460.9	449.75	565.42	489.5	429.82	363.05
Dogs Euthanized El Dorado	805.84	771.23	954.63	943.25	812.17	654.23	393.1	275.13
Dogs Euthanized San Mateo	148.32	183.91	184.21	218.63	230.7	284.44	224.94	244.45
Dogs Euthanized Orange	276.94	344.28	369.52	384.6	397.74	325.93	305.21	257.51
Dogs Euthanized Santa Cruz	406.37	359.35	347.48	249.85	233.57	315.37	188.4	311.27
Dogs Euthanized Nevada	1264.31	966.22	1068.73	1093.82	861.71	624.87	501.4	365.41
Dogs Euthanized San Luis Obispo	351.42	391.07	393.17	467.88	442.46	369.23	269.24	212.47
Dogs Euthanized Mono	891.06	643.83	628.93	375.06	701.9	460.72	271.99	488.45
Dogs Euthanized Santa Clara	264.19	274.13	325.05	363.44	365.23	381.69	334.46	268.33

Stats by pop

27 County Average (excludes zero 1341.86 1322.4 1357.33 1495.73 1544.74 1376.57 1270.66 1054.07

**Dogs and Cats Processed in Shelters / 100,000 population**

	1994	1995	1996	1997	1998	1999	2000	2001
Dogs and Cats P Madera		6621.23	6628.55	6893.87	7588.29	6654.16	7001.83	5643.18
Dogs and Cats P Merced		5695.6	5106.74	6707.94	7400.75	7151.89	6330.04	6026.39
Dogs and Cats P Shasta		9643.34	9509.54	10034.67	10385.81	7552.86	7187.28	6589.91
Dogs and Cats P Yuba		6173.24	6001.31	5351.24	5991.49	6341.9	6484.36	6186.34
Dogs and Cats P Fresno		7130.16	6969.26	7270.12	7653.02	7446.09	6932.84	6081.51
Dogs and Cats P Mariposa		4888.29	4352.59	4121.26	4583.92	4261.28	3183.78	4413.47
Dogs and Cats P Tuolumne		7617.93	7156.64	7075.58	7922.88	6788	6631.67	5635.76
Dogs and Cats P San Bernardino		4092.66	4831.51	5969.79	5479.36	1665.36	5042	4605.23
Dogs and Cats P Butte		4512.88	5315.61	6006.13	4678.63	4881.61	5002.47	4463.42

	1994	1995	1996	1997	1998	1999	2000	2001
Dogs and Cats P San Joaquin		4610.92	1823.82	4807.09	5465.68	5645.24	7023.44	5183.01
Dogs and Cats P Nevada		3246.54	3349.4	3362.11	3155.23	2753.03	2241.02	2832.77
Dogs and Cats P Siskiyou		1899.02	2117.96	1986.15	1968.28	2044.24	1762.73	2540.21
Dogs and Cats P Del Norte		3273.15	3711.96	3435	4204.73	3884.61	3934.97	3524.93
Dogs and Cats P Napa		2442.22	2520.2	2720.72	3222.88	2777.28	2955.52	2610.18
Dogs and Cats P Yolo		4211.55	4149.96	4355.03	4516.86	3195.35	4234.48	4191.89
Dogs and Cats P Tehama		5728.76	6037.78	6377.88	7500.59	6158.46	5774.47	5258.83
Dogs and Cats P El Dorado		1799.08	3497.86	3594.7	2686.51	2885.03	2333.06	2243.14
Dogs and Cats P Monterey		2114.85	2763.82	2493.49	3872.16	2017.8	2662.27	2687.87

	1994	1995	1996	1997	1998	1999	2000	2001
Dogs and Cats P San Luis Obispo		2533.46	2233.95	2341.63	2131.49	2076.12	1815.84	2082.66
Dogs and Cats P Santa Cruz		2767.8	2709.3	3236.2	2175.29	2622.39	1892.41	2906.52
Dogs and Cats P Los Angeles		2295.65	1918.18	1837.21	1785.02	2012	2239.05	2056.64
Dogs and Cats P Mono		3408.02	4000.34	1433.6	4172.03	3408.02	1528.03	2832.86
Dogs and Cats P San Diego		1335.86	1701.61	1423.22	2027.71	1911.2	2051.46	1951.1
Dogs and Cats P Ventura		2099.26	2150.01	2183.13	2098.26	2017.1	1825.91	1392.78
Dogs and Cats P Orange		1702.28	1733.32	1817.16	1821.35	1651.89	1566.28	1688.19
Dogs and Cats P San Mateo		1710.34	1679.88	726.65	1655.46	1545.56	1326.05	1264.4
Dogs and Cats P Santa Clara		2035.13	2088.54	2132.26	2199.28	2067.91	2006.27	1425.79

27 County Average (excludes zero values) Dogs & Cats 3910.71 3928.13 4062.73 4383.07 3830.24 3813.69 3641.44

Stats by pop

**Dogs and Cats Euthanized per 100,000 population**

	1994	1995	1996	1997	1998	1999	2000	2001
Dogs and Cats EtYuba		5110.53	5088.25	4305.37	4819.2	4898.05	5218.33	4826.36
Dogs and Cats EtMadera		5494.05	5432.06	5554.7	5565.58	5151.66	5177.28	4145.06
Dogs and Cats EtFresno		5832.16	5452.13	5691.8	5925.01	5680.73	5271.9	4436.93
Dogs and Cats EtMerced		4298.2	3490.93	4154.56	5373.18	4741.84	4141.14	3500.66
Dogs and Cats EtShasta		6900.21	6926.39	7073.85	7561.99	4998.55	4702.47	3973.66
Dogs and Cats EtSan Bernardino		3157.21	3630	3986.44	4133.99	1218.42	3551	2968.76
Dogs and Cats EtTuolumne		6176.18	5511.3	5615.25	5945.61	4732.9	4027.07	3168.43
Dogs and Cats EtButte		3026.78	3768.71	4298.11	3541.12	3409.15	3257.97	2862.22
Dogs and Cats EtMariposa		2343.7	1739.75	2157.45	2445.32	1939.17	1341.19	1375.61
	1994	1995	1996	1997	1998	1999	2000	2001
Dogs and Cats EtSan Joaquin		3624.09	1295.7	3807.99	4164.87	3931.94	4697.95	3155.01
Dogs and Cats EtTehama		4688.33	4659.37	5258.95	6195.62	4450.89	3598.45	2933.93
Dogs and Cats EtDel Norte		2215.67	2737.57	2529.99	2965.91	2465.25	2332.35	1948.48
Dogs and Cats EtSiskiyou		1161.75	1474.04	1254.72	1199.61	830.63	393.13	1095.51
Dogs and Cats EtYolo		1909.87	1891.75	2082.13	2170.11	1891.46	1760.33	1739.56
Dogs and Cats EtNapa		1606.73	1405.98	1534.12	1760.94	1413.52	1343.7	1020.14
Dogs and Cats EtMonterey		1268.69	1708.65	1802.58	2358.92	1052.32	1403.86	1234.1
Dogs and Cats EtLos Angeles		1620.23	1286.79	1249.31	1271.16	1331	1390.99	1257.26
Dogs and Cats EtEl Dorado		771.23	2131.24	2015.52	1464.8	1476.22	842.82	814.85
	1994	1995	1996	1997	1998	1999	2000	2001
Dogs and Cats EtSanta Cruz		1482.51	1182.58	962.73	850.58	1034.03	616.81	1282.65
Dogs and Cats EtSan Mateo		897.76	844.39	218.63	817.05	772.14	667.33	597.36
Dogs and Cats EtVentura		1237.55	1276.8	1298	1191.47	1144.4	986.56	673.01
Dogs and Cats EtNevada		2362.38	2260.39	2306.56	1918.6	1421.36	935.8	840.54
Dogs and Cats EtSan Diego		798.87	962	747.83	1112.65	879.66	800.76	764.3
Dogs and Cats EtOrange		775.1	787.26	846.68	867.45	688.01	606.37	631.48
Dogs and Cats EtSan Luis Obispo		1499.76	1303.14	1270.49	1242.81	942.17	695.9	518.62
Dogs and Cats EtMono		1364.92	1444.84	775.13	1560.69	937.33	606.15	899.36
Dogs and Cats EtSanta Clara		1230.32	1290.05	1305.66	1346.27	1243.08	1146.61	911.09
27 County Average (excludes zero values) Dogs & Cats		2698.32	2628.97	2744.61	2954.46	2395.4	2278.3	1984.26

Stats by pop

**Cats Processed in Shelters / 100,000 population**

	1994	1995	1996	1997	1998	1999	2000	2001
Cats Processed in Shasta		4986.24	4692.71	4947.72	5198.91	3304.59	3302.41	2426.06
Cats Processed in Tuolumne		4491.24	3716.13	3532.78	4028.4	3332.9	3152.89	2788.43
Cats Processed in Yuba		2421.81	2663.16	1989.65	2526.08	2423.14	2619.94	2519.87
Cats Processed in Madera		2963.4	2514.52	2334.21	2601.08	74.66	1935.72	1824.78
Cats Processed in Merced		2340.61	1815.53	2304.95	2838.86	2618.82	2191.73	1875.17
Cats Processed in Mariposa		1917.57	1650.38	1412.26	1495.34	1679.83	956.32	1194.92
Cats Processed in Butte		1704.38	2206.52	2621.29	2206.08	2102.03	2091.67	1760.36
Cats Processed in Fresno		3264.03	2798.76	2878.57	3063.65	2703.68	2588.77	2286.63
Cats Processed in San Bernardino		1578.98	1674.95	1910.48	1793.78	535.74	1641	1487.33
	1994	1995	1996	1997	1998	1999	2000	2001
Cats Processed in San Joaquin		1884.45	768.69	1523.01	1979.61	1962.44	2383.11	1773.99
Cats Processed in Nevada		1716.31	1535.38	1529.11	1468.34	1231.04	794.24	1026.97
Cats Processed in Napa		1411.35	1448.35	1469.02	1706.65	1355.81	1432.74	1257.97
Cats Processed in Monterey		645.88	1246.77	1093.97	1710.54	803.25	1103.05	1180
Cats Processed in Yolo		2011.43	1985.08	1995.27	2171.35	1254.32	1945.84	1912.83
Cats Processed in Santa Cruz		1629.17	1464.54	1356.06	1179.41	1376.21	919.74	1641.68
Cats Processed in Siskiyou		0	0	0	0	0	124.27	458.16
Cats Processed in El Dorado		0	1406.75	1370.42	803.63	1075.26	845.37	861.95
Cats Processed in San Luis Obispo		1356.32	1104.83	1042.26	964.92	838.26	709.62	879.78
	1994	1995	1996	1997	1998	1999	2000	2001
Cats Processed in Los Angeles		1006.41	826.59	757.21	671.92	695	718.12	777.6
Cats Processed in San Mateo		990.45	945.23	902.63	860.03	794	687.09	613.88
Cats Processed in San Diego		593.02	709.55	432.82	812.07	691.53	683.91	788.14
Cats Processed in Orange		661.95	645.12	715.8	682.75	560.77	510.52	640.96
Cats Processed in Mono		875.61	1393.85	458.41	1279.93	1096.2	567.3	806.33
Cats Processed in Ventura		887.3	916.48	925.24	803.66	739.75	676.29	641.27
Cats Processed in Tehama		2347.82	2336.97	2412.4	3159.19	2152.49	1853.53	1640.33
Cats Processed in Del Norte		104.31	28.59	42.68	56.76	25.34	69.13	72.98
Cats Processed in Santa Clara		1259.55	1247.6	1235.55	1278.27	1158.3	1119.82	787.68
27 County Average (excludes zero values) Cats F		1801.98	1682.42	1661.3	1820.82	1407.13	1393.49	1354.54

Stats by pop

**Cats Euthanized in Shelters / 100,000 population**

	1994	1995	1996	1997	1998	1999	2000	2001
Cats Euthanized iYuba		2205.67	2474.35	1753.42	2231.54	2072.44	2329.94	2135.46
Cats Euthanized iTuolumne		4051.19	3247.32	3183.49	3502.96	2775.87	2465.25	2089.97
Cats Euthanized iMadera		2635.86	2209.59	2136.69	2321.58	61.53	1672.93	1611.97
Cats Euthanized iFresno		2941.43	2484.34	2557.07	2711.74	2338.72	2290.37	1982.55
Cats Euthanized iMerced		1920.21	1301.72	1653.46	2237.67	2028.21	1616.4	1454.6
Cats Euthanized iShasta		4275.81	3931.46	3861.63	4361.43	2510.7	2540.13	1783.81
Cats Euthanized iMariposa		1022.71	726.88	769.23	862.02	943.06	408.19	612.03
Cats Euthanized iButte		1375.44	1782.23	2023.29	1890.07	1733.39	1656.95	1404.4
Cats Euthanized iSan Bernardino		1383.27	1424.17	1482.73	1533.8	457.48	1359	1183.38
	1994	1995	1996	1997	1998	1999	2000	2001
Cats Euthanized iSan Joaquin		1709.91	645.76	1447.43	1804.33	1606.56	1867.57	1341.41
Cats Euthanized iNapa		1251.96	1066.14	1103.43	1262.51	947.77	944.2	828.48
Cats Euthanized iMonterey		515.63	948.06	1102.99	1348.32	543.57	758.35	721.81
Cats Euthanized iYolo		1179.34	1136.08	1174.5	1289.08	1130.88	1082.46	1135.12
Cats Euthanized iSiskiyou		0	0	0	0	0	74.56	333.42
Cats Euthanized iEl Dorado		0	1176.61	1072.27	652.62	821.99	449.72	539.72
Cats Euthanized iLos Angeles		830.79	646.31	591.35	542.04	551	560.65	571.97
Cats Euthanized iSanta Cruz		1123.16	835.1	712.88	617.01	718.66	428.4	971.38
Cats Euthanized iSan Mateo		713.85	660.17	623.26	586.35	487.7	442.4	352.91
	1994	1995	1996	1997	1998	1999	2000	2001
Cats Euthanized iNevada		1396.16	1191.66	1212.74	1056.89	796.49	434.4	475.14
Cats Euthanized iVentura		652.18	658.53	686.44	574.18	512.54	482.58	447.33
Cats Euthanized iOrange		430.81	417.74	462.08	469.71	362.08	301.16	373.96
Cats Euthanized iTehama		2201.54	2149.5	2254.36	2962.41	1781.44	1046.95	955.68
Cats Euthanized iSan Diego		442.89	501.1	298.08	547.22	390.16	370.95	401.24
Cats Euthanized iSan Luis Obispo		1108.69	909.96	802.62	800.35	572.94	426.66	306.15
Cats Euthanized iMono		721.09	815.91	400.07	858.79	476.61	334.16	410.92
Cats Euthanized iDel Norte		104.31	28.59	35.29	56.76	25.34	50.94	47.43
Cats Euthanized iSanta Clara		956.18	965.01	942.22	981.04	861.38	812.15	642.76
27 County Average (excludes zero values) Cats E		1486	1320.55	1320.88	1463.94	1058.02	1007.68	930.19

or next closest value.

2002	2003	2004	2005
3824.14	3363.85	2802.12	2401.6
3400.95	2786.88	2887.56	2367.81
3343.7	3232.35	3104.78	2939.95
3309.99	2986.21	2182.33	1957.31
3121.4	3082.34	2850.13	2854.95
2930.13	3032.69	3029.29	3167.57
2803.6	2754.86	2403.68	2256.35
2658.94	336.87	411.53	1856.49
2347.04	1480.13	2436.48	2349.74

2002	2003	2004	2005
2342	2277.01	1675.97	1830.65
2299.18	2611.09	2450.04	2450.04
2146.54	1852.34	1654.1	1657.35
1823.29	1998.54	3637.52	2297.64
1615.96	1509.04	1382.21	0
1231.09	1103.05	1152.7	1051.5
1184.9	1050	914.15	869.33
1079.27	1540.9	1377.44	1387.97
1054.67	936.06	901.65	901.65

2002	2003	2004	2005
999.77	1137.78	1345.82	1266.52
977.36	958.03	869.65	815.24
915.43	930	945.39	943.4
855.63	821.27	781.17	928.21
797.77	721.91	665.71	496.27
787.1	739.54	599.77	599.77
729.34	741.44	703.99	679.07
571.9	550.91	439.97	513.71
85.62	466.17	446.02	417.5

Stats by pop

1823.58      1666.71      1631.52      1528.06

2002	2003	2004	2005
2422.47	1811.71	1426.26	841.23
2295.39	1958.9	1635.4	1356.79
2224.01	2173.43	1897.93	1848.9
2034.61	1384.58	1011.94	583.7
1646.9	167.36	193.13	936.42
1442.27	1318.33	756.16	598.98
1256.34	768.19	1367.7	1170.43
1242.01	1341.56	1025.1	846.13
1048	1217.15	1132.6	1132.6

2002	2003	2004	2005
1044.36	739.88	824.28	413.58
901.58	742.7	782.47	1135.23
760.76	628.03	463.29	476.29
735.41	500.27	265.57	352.82
548.54	514.92	418.61	421.95
470.91	455.86	373.86	329.17
340.4	303	265.6	232.82
326.58	259	191.14	174.32
316.75	206.8	186.34	101.71

2002	2003	2004	2005
277.56	265.49	214.46	212.76
234.15	217.77	247.34	228
222.9	188.5	92.14	97.84
200.18	177.49	167.63	159.62
191.75	160.23	102.49	102.49
173.59	96.72	54.47	0
163.08	98.82	77.46	77.46
153.81	241.58	181.02	110.13
18.81	174.29	167.54	126.32

Stats by pop

840.49      670.84      574.89      521.03

2002	2003	2004	2005
7420.86	7235.13	6667.89	6817.02
6672.61	6127.27	6395.07	5554.28
6508.25	6715.54	5059.74	4092.39
6073.36	6225.64	5786.8	5894.87
5885.26	6235.74	6086.85	6527.12
5521.4	6647.59	6398	7006.76
5170.62	5419.59	4856.02	5575.93
4936.86	709.87	861.44	4348.57
4849.99	5557.85	5391.08	5391.08

2002	2003	2004	2005
4632.73	2624.52	6171.38	6354.42
3302.01	2813.12	2558.86	2558.86
3217.16	3076.41	2441.91	2716.71
2852.31	2780.38	2535.79	2363.14
2617.89	2359	2099.45	2123.45
2534.27	4204.34	4105.41	4075.27
2422.79	2998.77	6078	3889.26
2380.79	2380.1	2303.32	2302.63
2327.52	2375	2423.16	2574.22

2002	2003	2004	2005
2022.5	1901.29	1621.4	1621.4
1886.98	1942.14	1549.36	1549.36
1798.69	1989.98	1778.74	1726.78
1742.64	2051.68	2034.51	2283.46
1625.72	1675.35	1597.86	1809.32
1498.68	1430.59	1322.56	1147.43
1465.93	1464.01	1398.41	1444.57
1295	1357.97	1091.82	1339.29
168.01	1380.36	1284.48	1287.65

3438.18      3395.53      3403.68      3495.38

Stats by pop

2002	2003	2004	2005
4581.16	3990.13	3609.06	3255.69
4372.55	3850.07	3256.42	3016.21
4074.41	4259.14	3973.92	4165.75
3794.18	3091.1	2476.62	1610.33
3183.69	3526.77	2471.74	1589.09
2941.3	361.95	412.63	2248.5
2787.65	3161.33	2716.32	3346.34
2597.24	2828.16	2785.39	2785.39
2531.35	2768.24	2727.48	3477.68

2002	2003	2004	2005
2392.73	1312.52	3435.96	3282.81
1339.28	1129.39	2042.35	1048.71
1292.85	1359.49	1088.72	867.02
1285.27	908.56	656.1	698.97
1209.03	1771.16	1747.18	1776.42
1084.23	916	748.69	781.79
1055.91	1017	977.71	976.38
965.39	1120.41	936.96	894.18
744.08	800.66	743.17	825.21

2002	2003	2004	2005
653.75	726.82	521.61	521.61
640.51	633.51	387.32	385.92
624.67	520.68	455.87	426.2
589.15	390	192.17	192.17
560.53	605.89	499.09	532.72
504	499.64	470.04	512.89
363.06	254.97	141.56	141.56
269.17	467.58	369.9	464.13
47.51	803.85	731.39	691.55
1721.65	1595.37	1502.79	1500.56

Stats by pop

2002	2003	2004	2005
2720.4	3109.94	2352.93	1682.96
2637.64	3101.35	2777.97	3420.16
2601.55	2744.98	2378.62	2421.66
2467.46	2551.5	2445.01	2826.07
2389.19	2384.12	2387.09	2109.81
2311.74	3111.46	2844.85	3206.34
2257.97	2554.21	2522	2522
2177.88	2414.04	2421.35	2716.58
1643.19	264.31	297.84	1633.79

2002	2003	2004	2005
1568.88	673.29	2485.92	2600.8
1389.77	1022.32	893.04	893.04
1162.61	1050	936.81	1000.63
1092.06	1112	1132.59	1275.89
1074.81	1985.48	2024.63	1972.54
994.63	1108.52	878.92	878.92
916.43	812.1	763.22	867.62
846.07	933.21	776.19	836.55
786.04	787.83	560.73	560.73

2002	2003	2004	2005
694.86	875.96	760.49	763.51
680.93	768.13	621.82	784.54
614.33	683.14	647.73	688.31
572.27	545.49	516.19	577.75
561.41	724.75	519.44	825.99
552.08	551.81	503.37	517.36
475.34	790.91	1908.86	1193.13
76.26	17.94	88.37	31.34
72.46	832.67	758.2	775.82
1333.58	1411.23	1400.29	1485.32

Stats by pop

2002	2003	2004	2005
2285.77	2031.22	1973.65	1898.9
2026.89	2533.3	2253.03	2870.05
1950.08	2038.36	1830.16	2174.98
1850.4	2085.7	2075.99	2316.85
1759.57	1706.52	1464.69	1026.63
1741.43	2208.44	1715.58	990.11
1629.78	2025.54	1945	2342.45
1549.24	1611.02	1652.8	1652.8
1294.41	194.59	219.5	1312.08

2002	2003	2004	2005
1136.39	544.34	2068.26	2112.38
757.66	658	557.55	607.47
715.5	714	712.12	743.56
660.48	1256.24	1328.58	1354.47
549.86	408.29	390.54	346.16
509.94	582.89	495.84	597.21
494.49	664.56	563.09	565.01
462	566.59	419.12	419.12
417.61	445.02	295.17	288.09

2002	2003	2004	2005
415.56	293.28	137.71	137.71
307.92	313.87	269.53	324.48
303.82	322.15	302.42	353.27
294.92	389.5	1218.07	635.13
282.97	340.41	284.64	319.96
199.98	156.14	64.09	64.09
115.36	226	188.89	354
50.84	17.94	63.63	20.89
28.7	629.56	563.85	565.23
881.17	924.57	927.91	977.52